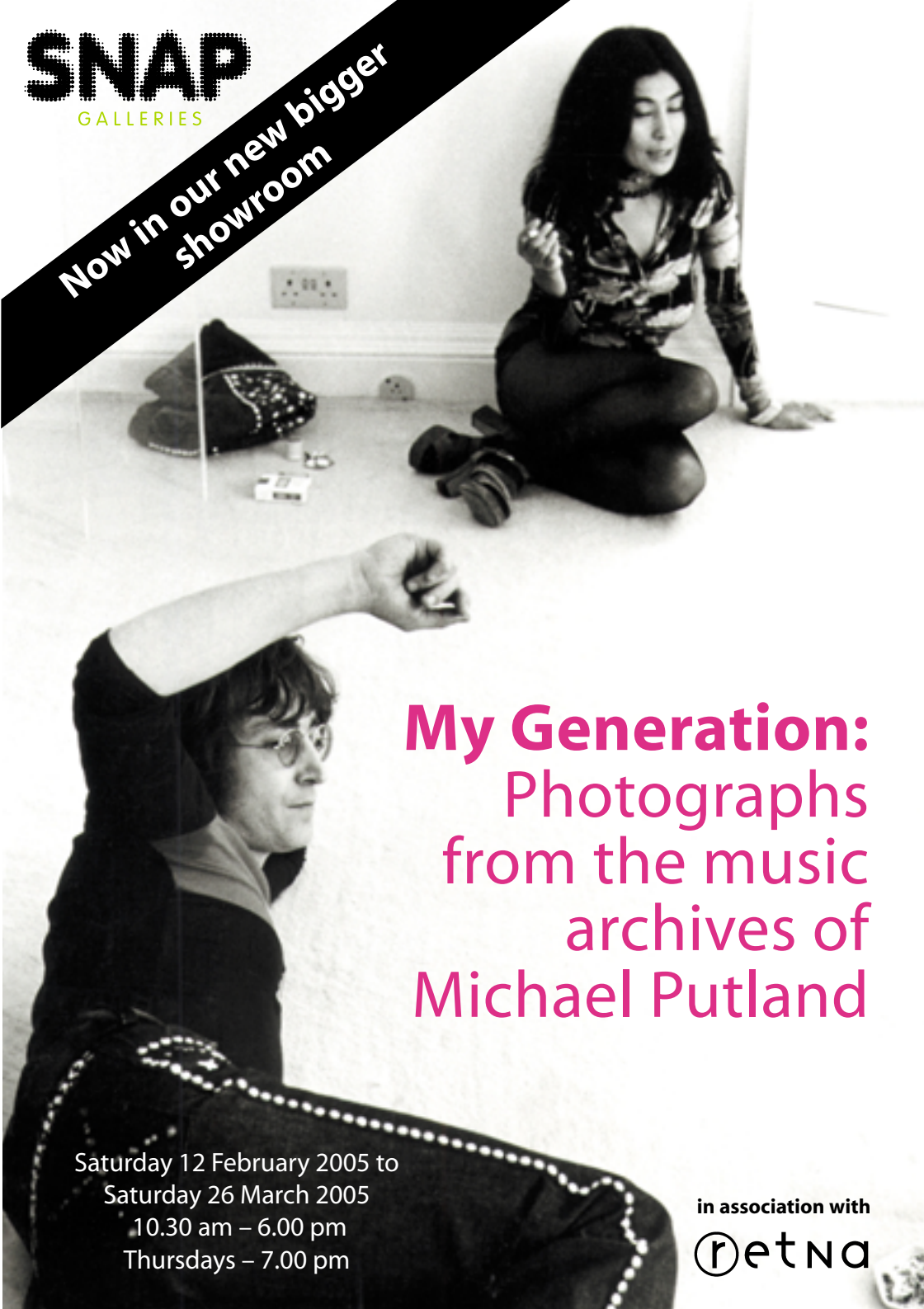


**SNAP**  
GALLERIES

Now in our new bigger  
showroom



**My Generation:**  
Photographs  
from the music  
archives of  
Michael Putland

Saturday 12 February 2005 to  
Saturday 26 March 2005  
10.30 am – 6.00 pm  
Thursdays – 7.00 pm

in association with  
**retna**

# My Generation

## Photographs from the music archives of Michael Putland

AC/DC  
Beach Boys  
Jeff Beck  
Chuck Berry  
Bolan  
Bowie  
James Brown  
Clash  
Cream  
Creedence  
Duran Duran  
Ian Dury  
ELO  
Faces  
Marianne Faithfull  
Bryan Ferry  
Aretha Franklin  
Genesis  
Grateful Dead  
George Harrison  
Debbie Harry  
Jimi Hendrix

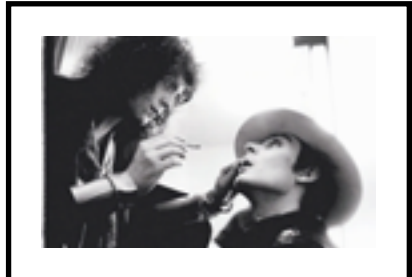
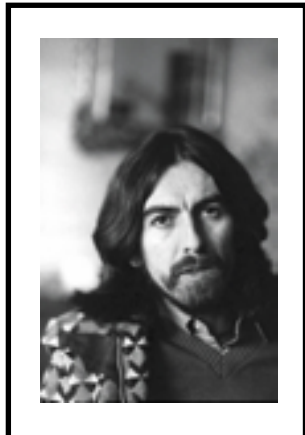
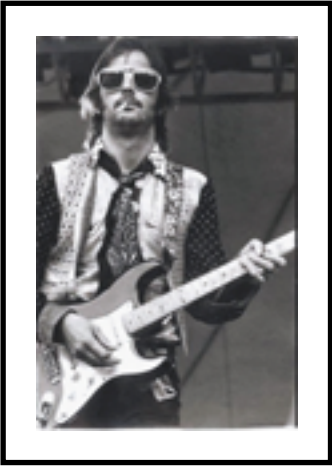
Michael Putland didn't have a day off in the seventies. At least that's how it seemed to him at the time. And looking back, there's just no other way he could have assembled a photographic archive of such immense breadth and depth. His A to Z would wrap around a small village. Michael started photographing musicians in the late sixties. He really hit his stride in the seventies and by the mid-eighties he had captured pretty much everyone of significance in the music business over the course of a twenty year career.

"My Generation" is Michael's first solo exhibition in the UK and will consist of around 100 photographs which, as a body of work, represent a cross section of his career as a music photographer — from AC/DC to Frank Zappa, and back again, taking in Bowie, Bolan, Clapton, The Clash, Lennon, McCartney, Harrison, Hendrix, Rod Stewart, Bryan Ferry, The Who, The Rolling Stones and many many others. Michael has a very intimate and personal style of portraiture and combined this with a flair for live work. He is probably best known for his images of The Rolling Stones from their 1973 tour, which have been published in a lavish limited edition book "Pleased to meet you", but he has a rich seam of material outside his Stones archive.

All Michael's photographs are available to purchase, and admission to the exhibition is free. Michael will be at the gallery all day on the opening Saturday, 12 February, so please try and make time to pop down, have a glass of wine and a chat with him. Michael has consciously set initial prices for his work at a level which represents truly exceptional value in the current marketplace. Couple this with the additional special offers we are making at the beginning of the exhibition, and there simply has never been a better time to acquire a Michael Putland original.

This is our first solo show of 2005 and will be the first in our new showroom at The Custard Factory which has almost twice the hanging space. It leads off what promises to be a very exciting programme for Snap this year. We have solo exhibitions for a number of photographers who have never shown their work in this country before. We're majoring on the sixties and seventies in 2005, as we continue to uncover unsung heroes of the genre from these two key decades that are screaming out to be put up on the walls for your viewing pleasure. We hope you enjoy Michael's exhibition and those that follow on, and very much look forward to seeing you at the new enlarged gallery in 2005.

Guy White  
Gallery Director



# My Generation



**Jerry Hall**, with Playboy (1982). Cover girl: Jerry Hall. Available as a signed handcrafted silver gelatin photograph, produced and finished by Michael Putland in his own darkroom.

Siouxsie Sioux  
Slade  
Small Faces  
Robert Smith  
Bruce Springsteen  
Sting  
Sly Stone  
T Rex  
Talking Heads  
Television  
Thin Lizzy  
Ike and Tina Turner  
Ultravox  
Undertones  
Velvet Underground  
Scott Walker  
Tom Waits  
Paul Weller  
The Who  
XTC  
X-Ray Spex  
Neil Young  
Frank Zappa

Photographs from the music archives of Michael Putland



## The Platinum Portfolio

Also available is a stunning portfolio of seven 16 x 20 inch platinum palladium prints, some of which are reproduced above. The whole set will be framed and on show in the exhibition. Platinums represent the very pinnacle of black and white photographic reproduction. These beautiful photographs are available to purchase individually, or as a complete set in a buckskin portfolio with matching slipcase. There is a strictly limited edition of 45 platinum examples of each photograph.

## About the gallery

Snap Galleries opened in The Custard Factory in 2004, and is one of the only galleries in the world to specialise in rare and exclusive rock and roll photography. We showcase the very best work by the cream of the photographers operating in the music genre from the fifties to the present day. Our mission is to bring you the things you always wanted but never knew you could get.



**Snap Galleries  
Gibb Square  
The Custard Factory  
Birmingham B9 4AA**



**Opening hours: Tuesday to Saturday, 10.30 am to 6 pm, Thursdays to 7 pm.  
and any other time by prior appointment.**

**Telephone 0121 224 7345**

**[www.snapgalleries.com](http://www.snapgalleries.com)  
[info@snapgalleries.com](mailto:info@snapgalleries.com)**

**The Custard Factory website is at [www.custardfactory.com](http://www.custardfactory.com)**

### Directions

On foot, The Custard Factory is just a few minutes walk from The Bull Ring and Selfridges. From outside Selfridges, aim yourself downhill towards Digbeth and pick up some momentum. Head straight down Digbeth High Street and The Custard Factory is about a 5 minute walk, straight ahead. On your travels you will pass the bus station on your right and South Birmingham College on your left. Shortly after the College, you'll see a red brick building with a "Custard Factory" banner on it. You're almost there. Turn left when you get to the musical instrument shop and keep going past the row of green shops - you'll come to a fountain and a row of blue fronted retail units — we are in one of those. We're the one with the photographs.

If you are in the car, drive down Digbeth High Street heading away from the city centre, and turn left at the traffic lights by The Old Crown Pub, into Heath Mill Lane. The car park (pay and display) is just after Air nightclub — the entrance is a collage of crushed cars on the right.

